



JSI Center for Environmental Health Studies
44 Farnsworth Street, Boston, MA 02210
(617) 482-9485, <http://www.jsi.com>

*A Joint Project of JSI
and the Louisiana State University
Through a Cooperative Agreement with
the U.S. Environmental Protection Agency*

Medical Communities Project

Environmental Health Intake and Community Mapping

Objective:

An Environmental Health Intake Form for health providers is being piloted in health centers for gaining quick access to information about patient and community environmental health status. The results can be input into free computer mapping software that contains information on the community's environmental status. The results can be used to advance patient health, create community profiles, and identify target areas for public health campaigns.

Description:

Tools include an Environmental Health Intake Form to learn patients' environmental health status. The intake form asks questions about personal, indoor home, and community exposure factors, along with health symptoms and diseases that may be related to environmental conditions. Computer G.I.S. software maps results, incorporating additional community data. National pilot sites include Boston, MA; Chicago, IL; New Orleans, LA; and Baltimore, MD. These sites were selected to address concerns over disproportionate risks to under-served populations and the need for environmental health data.

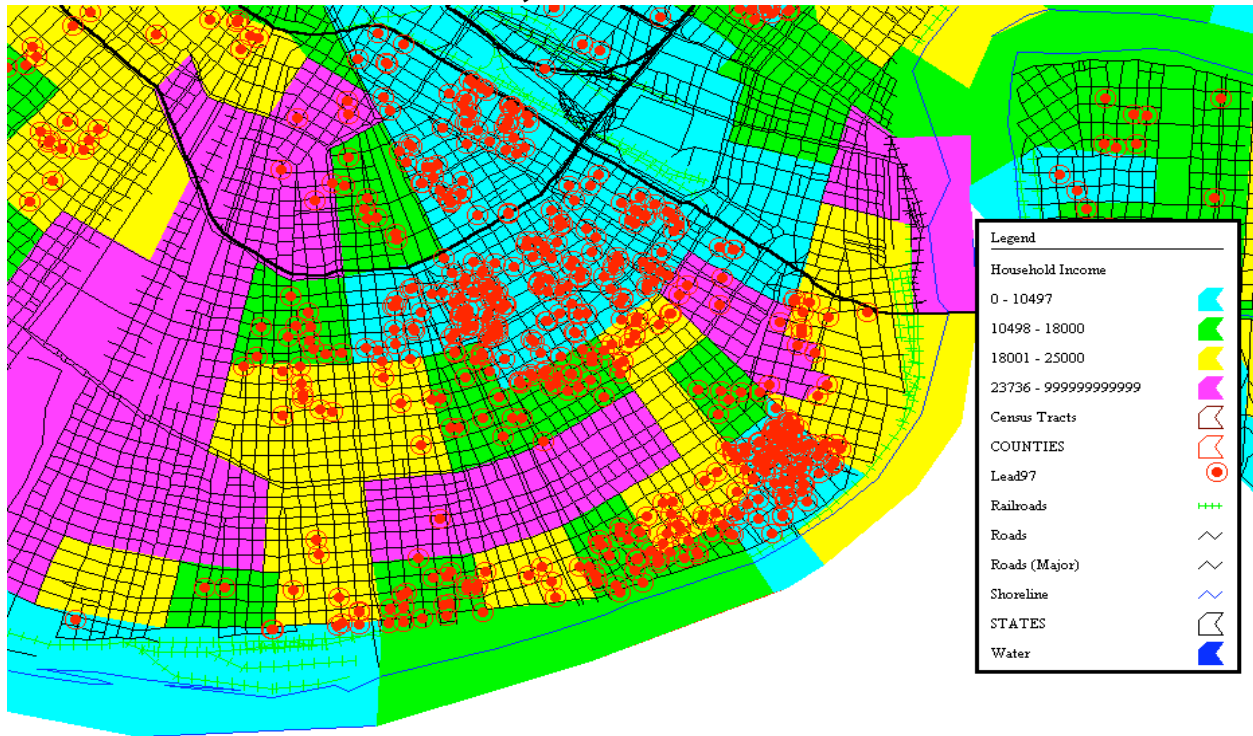
Results:

Pilots identified exposures to asthma trigger factors as well as lead and other toxic chemicals in patient environments. Asthma, breathing difficulties, and other health symptoms and conditions potentially indicative of environmental exposures were documented and clinical services provided. Data have been used to advance patient health, create community profiles, and launch collaborative environmental health campaigns. The model and tools were successful in expanding health center capacity to generate environmental health data and take preventive action; despite a context of limited health center resources.

For More Information:

The project is still under development, but draft tools may be available for clinics interested in piloting the forms. Contact Terry Greene at the above JSI address, e-mail: tgreene@jsi.com.

Lead Screening and Income Levels by Tract 1997 - New Orleans, LA



Potential Exposure Sites 1997 - Bowdoin St. Health Center, Boston, MA

